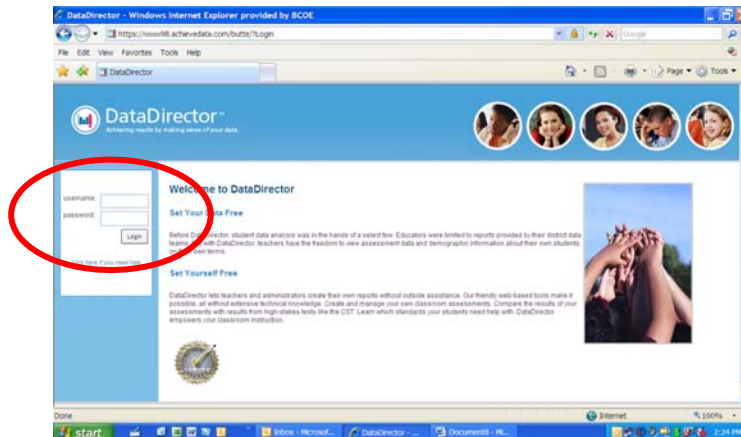


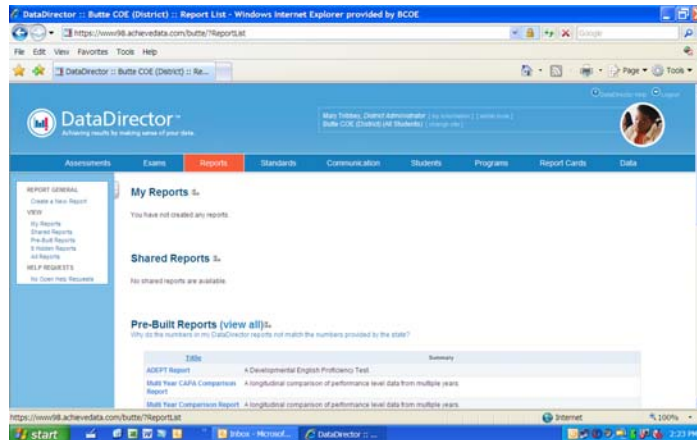
# Comparing CST Cluster Score Data – Data Director August 16, 2010

Launch Browser and go to:  
<http://www.achievedata.com/butte>

Enter your  
**Username  
& Password**

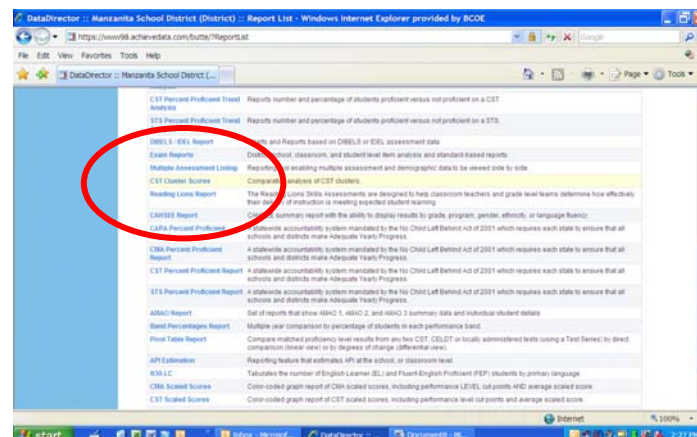


Click on the tab  
**Reports**



Scroll down to the  
**Pre-Built Reports**

Click on the words  
**CST Cluster Scores**



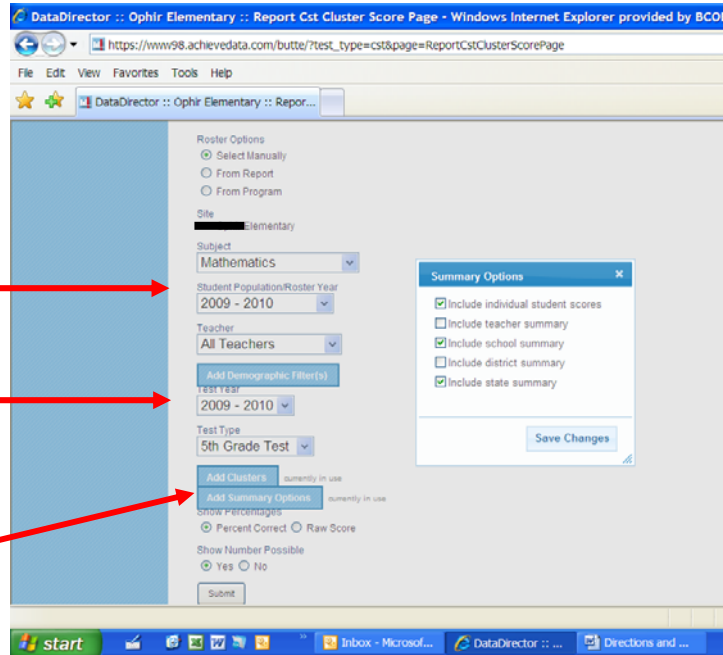
Choose **Select Manually**

Choose the **Subject** area

Choose the 2009-10 **Roster Year**.

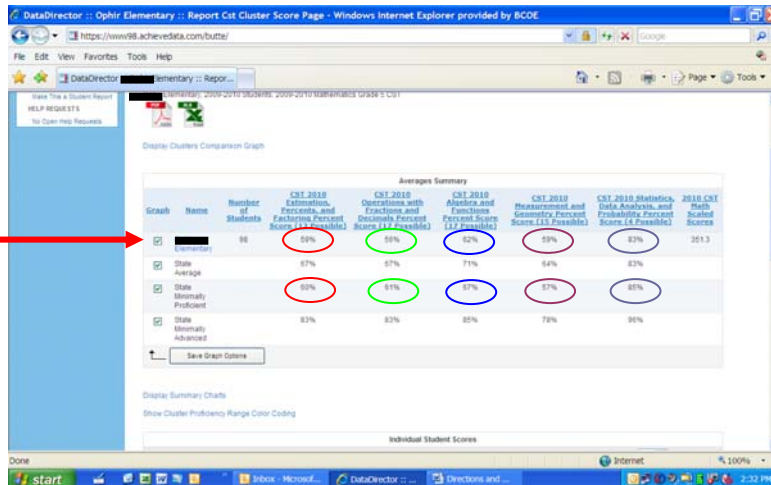
Choose the 2009-10 **Test Year**.

Click on **Add Summary Options**  
✓ Individual Student Score  
✓ Include School Summary  
✓ Include State Summary



Leave **Percent Correct**  
And **Number Possible** as shown.

The first row will be the average percent correct for all of the students in the school who took this test in 2009-10.



**Compare your School's average percent correct to the State Minimally Proficient score for each cluster area.** (Compare red to red, green to green, etc.)

**Go to Question #1 on the handout CST Cluster Analysis** and complete the table for the 2009-10 school year.

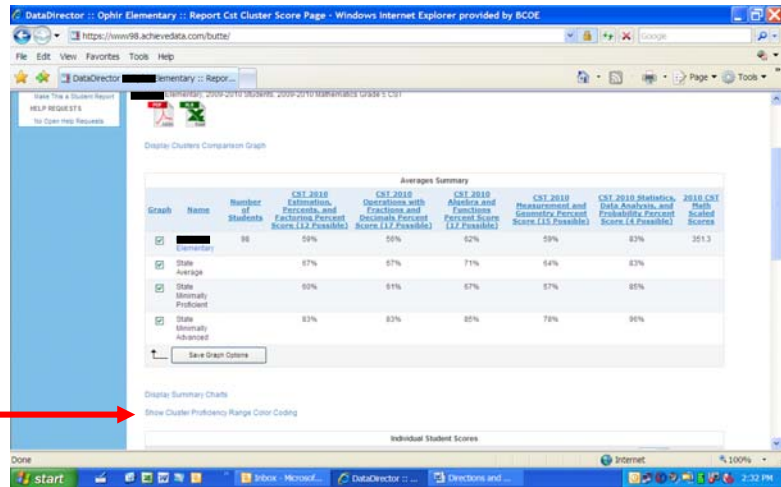
**Repeat the steps shown** on pages 1 and 2 for prior school years:

- Match the 2008-09 roster to the 2008-09 test.
- Match the 2007-08 roster to the 2007-08 test.
- Match the 2006-07 roster to the 2006-07 test.

## Drill Down to the Classroom:

Follow the steps shown above, but this time, use the **2010-11 roster** and the **2009-10 test**, to see how this year's students did on the test last spring.

When you get here... click on **Show Cluster Proficiency Range Color Coding**.



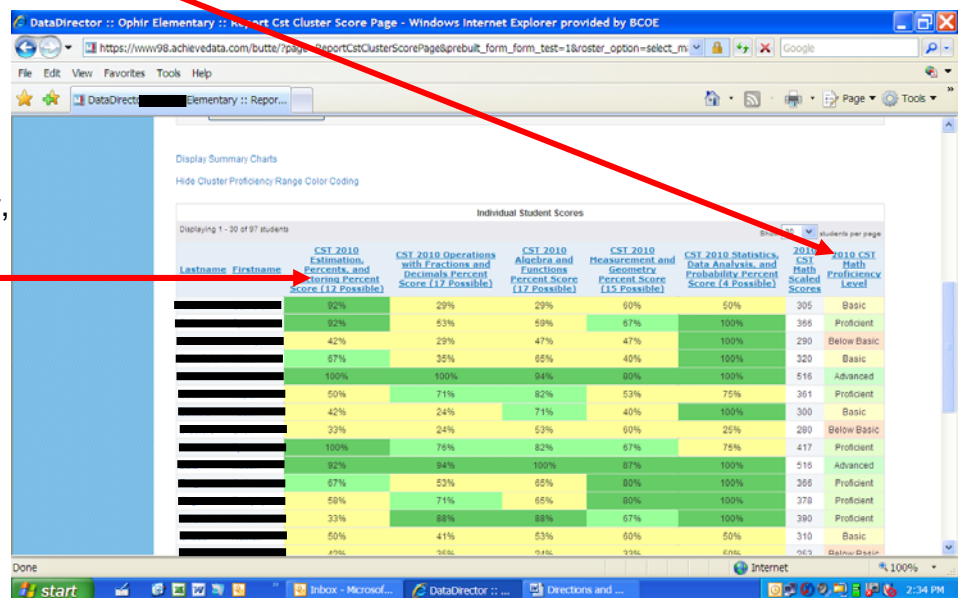
*NOTE: The color coding is terrific! What the software does is compare each individual student's cluster score to the average score of the State Minimally Proficient average score, which is the only way that the cluster scores are supposed to be used.*

- If the score is yellow, the student scored below the "proficient" students.
- If the score is light green, the student scored equal to or above the "proficient" students.
- If the score is dark green, the student scored equal to or above the "advanced" students.

Click on the Performance Level title to sort students from low to high. Click again to sort from high to low.

To sort by a specific cluster, click on the column heading for that cluster.

As you sort by each cluster, **identify groups of students** with similar strengths or similar needs.



First, **look for broad patterns** of student achievement or need. Next, **look for unexpected items**, such as a proficient student with one low cluster score.

Use what you learn to **complete Questions #2 and #3** on the handout. Remember: **use additional data to confirm or refute** what you see in the CST results.

(Thanks to CTAP Region IV for the model for this handout and some of the language on this page!)